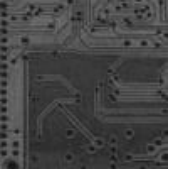


# Levels of Processing – Experimental Studies

**This activity will help you to:**

- Understand and recall studies into levels of processing
- Draw conclusions from psychological data
- Evaluate the levels of –processing approach

Use your text to find the results of the investigations outlined below. Use the results to draw a conclusion about whether the study supports or challenges the levels of processing approach to memory. Make sure you explain your reasoning when drawing your conclusions.



Study	Results	Conclusions
<p><b>Elias &amp; Perfetti (1973)</b> asked PPs to think of either rhymes or synonyms for a list of words. They later tested them for how many of the words from the list they recognized.</p>	<p>The PPs were able to recognise more words that they had thought of synonyms for.</p>	
<p><b>Craik &amp; Tulving (1975)</b> showed PPs a series of words and asked them questions about (1) what they looked like; (2) what they sounded like; or (3) what they meant. Later, PPs were given an unexpected recognition test.</p>		
<p><b>Morris et al (1977)</b> gave participants words to process either semantically or phonologically. Recall was assessed either by recognition or a task where PPs picked out words that rhymed with the original word list.</p>		